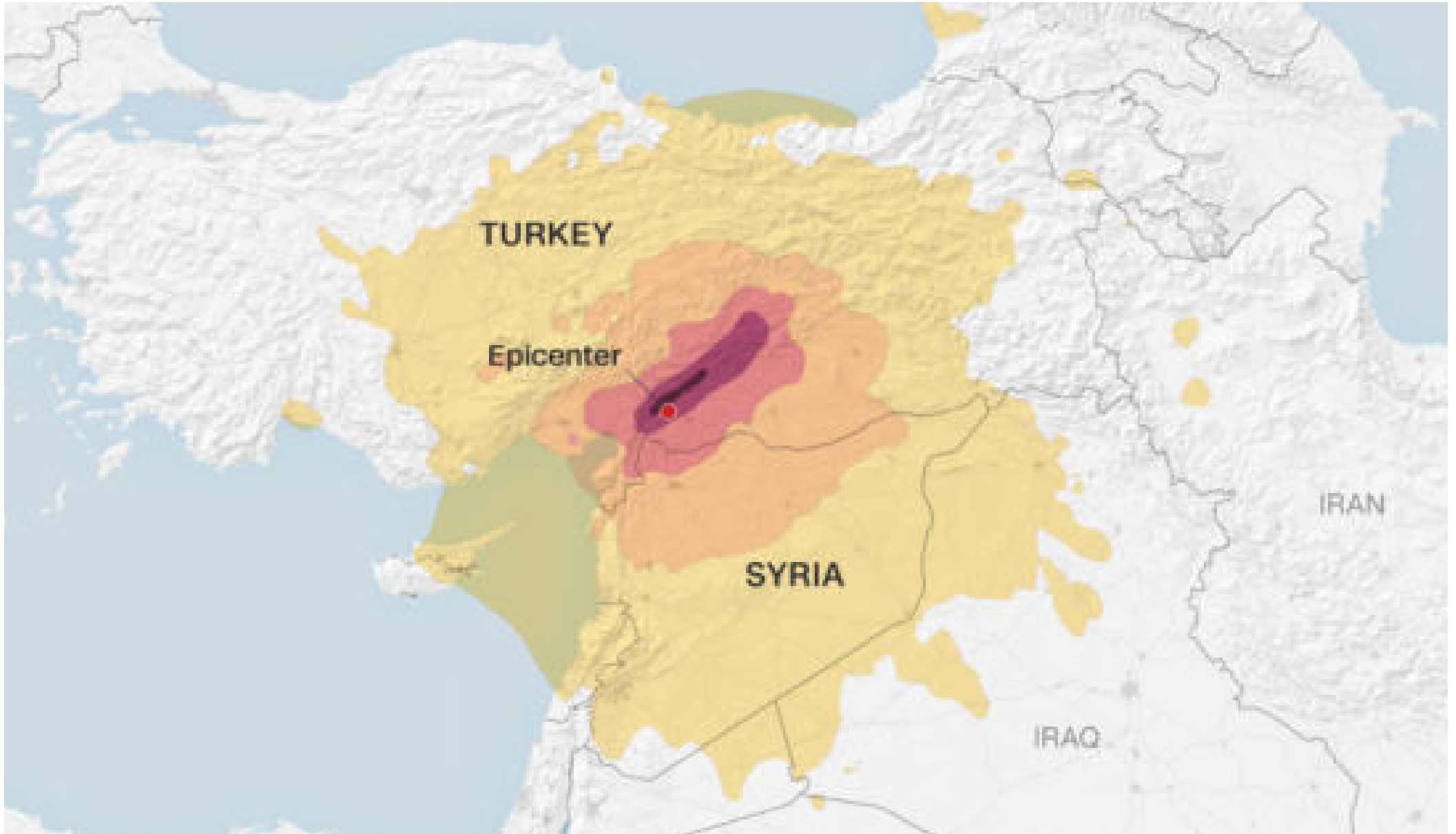


Y A P B O Z

EARTHQUAKE IN TÜRKIYE AND SYRIA

On Monday 6 February 2023, a powerful 7.8 magnitude earthquake hit the regions on the border between Turkey and Syria at dawn, razing entire buildings to the ground, killing over 50,000 people and injuring over 120,000.



Documentary photos



Documentary photos



Documentary photos



Documentary photos



Documentary photos



Documentary photos



DISPLACED PEOPLE

The number of displaced people amounts to over 2 million and 15 million people are affected in some way by the effects of the earthquake. On the Turkish front alone there are 164,300 collapsed or heavily damaged buildings.

"Families forced from their homes by the earthquake have spent the last four weeks worrying about survival, with their lives on hold as aftershocks continue to be felt. It is now vital that we do everything we can to help families rebuild their lives, providing children with psychosocial support, getting them back to school as soon as possible and ensuring they have some stability amid the chaos".

Unicef Regional Director for Europe and Central Asia, **Afshan Khan**

Displaced people



Displaced people



GROUP FOUR

Displaced people



Displaced people



Displaced people



Displaced people



The conditions in which displaced people find themselves are often worrying, particularly in the first days following the catastrophic event.

Long queues for food, problematic sanitary conditions, emergency care of the injured and their rehabilitation are just some of the difficulties that these people find themselves facing every day.

Secondly, their psychological conditions are affected, as they suffer not only from the loss of their home, their loved ones and personal effects, but often also from relatives and friends.

Displaced people



Displaced people



Displaced people



Displaced people



TRAUMA

The earthquake that struck Turkey was a sudden, traumatic and catastrophic event, which created profound terror in the Turkish population, also affecting the sense of stability, both physical and mental.

The earth is one of man's few certainties, a source of security and stability, and when it trembles the trust and sense of protection it produces is missing, transforming it into something to be feared and provoking very deep fears and emotions: fear of death, of losing control of one's life and feeling of helplessness and constant alertness. The earthquake, therefore, destroys man's certainties.

Being exposed to a serious earthquake involves a real trauma that manifests itself through multiple symptoms: anxiety, dizziness, loss of appetite, behavioral and sleep disorders and depression. In some cases, more serious symptoms may arise such as intrusive thoughts: continually thinking about what happened without finding a "way out"; avoidance: the person begins to avoid places, people, words to the point of isolating themselves physically, emotionally and socially; survival guilt: those who survive feel guilty because they survived, this often happens to parents when their child dies.

Displaced people



Displaced people



Displaced people



BENEFITS OF SPORT

Especially for children, these situations have greater psychological effects and it is important that they face their traumas by expressing the emotions they have experienced, anxieties, memories and fears. To do this it is important to use fairy tales and games as therapeutic tools.

Play and sport therefore become important elements for dealing with these difficult situations, in fact, sport is good for physical health and mental health, it helps to calm the mind, moderate stress and fight depression.

Physical activity affects the brain by releasing substances within our body, endorphins that regulate mood, reducing stress levels, and affects serotonin which stimulates the adrenaline hormone and helps improve mood . Furthermore, through sport you focus on goals and also on achieving them, increasing your self-esteem and self-affirmation.

GOOD PRACTICES

01 - TEMPORARY URBAN SKATEPARK

Jira Jira Collective + Leon Karssen and Vincent Blok, Rotterdam 2015



01 - TEMPORARY URBAN SKATEPARK

DESCRIPTION:

This project consists of a collection of nine movable structures that can be added to existing objects in the cityscape to create temporary obstacles. The modular skatepark was created by Martijn Hartwig and Dario Goldbach as part of their design project. Movable obstacles have been attached to public bins and billboards in Rotterdam, allowing skaters to take part in a 'guerrilla skate' session.

KEY WORDS:

Innovation, co-existence, urban space, transportability

CLIENT:

University project

LINKS:

<https://www.springwise.com/modular-obstacles-create-temporary-urban-skatepark/>

<https://popupcity.net/insights/rotterdam-collective-creates-modular-mobile-skatepark/>

02 - STACKABLE RAMP

Landwave



02 - STACKABLE RAMP

DESCRIPTION:

These portable ramps are made of high-density plastic and have a load capacity of 150 pounds. Weighing just 5 kilos each for the ramps and 7 for the platforms, the LandWave pieces are light enough to be moved and rearranged easily. The products are stackable, therefore allowing LandWave to be stored without taking up much space when not in use . The system is made up of only two basic pieces: the inclined ramp and the platform. Each platform comes with connectors to allow for stacking of pieces, while each ramp features rubber feet to prevent slipping.

KEY WORDS:

Easy assembly, stacking, resistance, modularity

LINKS:

<https://www.amazon.com/stores/page/31E59A17-5BD1-4B67-9C5D-544DFE86D852?ingress=0&visitId=df0d04da-995a-4964-b050-c1026184af1d>

<https://www.landwaveproducts.com>

03 - FOUR ONE FOUR

414Skateparks



03 - FOUR ONE FOUR

DESCRIPTION:

It consists of a kit for the autonomous construction of ramps, with quick and easy construction methods. The ramps are constructed using high quality birch plywood.

The beams are treated with the “tanalith” impregnation method, which provides long-term resistance against decay, insects and other organisms that damage the wood. The company also offers portable and transportable mini-ramps that can be easily mounted on any type of surface.

KEY WORDS:

Autonomy, wood, stability, resistance

LINKS:

<https://www.414skateparks.com>

<https://www.414skateparks.com/product-category/portable-street-ramps/>

<https://www.instagram.com/fouronefourskateparks/?hl=it>

04 - SPORTPARK FREILASSING

Sportpark Freilassing, Germany



04 - SPORTPARK FREILASSING

DESCRIPTION:

It is located in Germany and is one of the largest fitness areas in Europe.

The park is divided into four zones and each offers fitness experiences different in level and difficulty. There is a street workout space for expert calisthenics users, an area dedicated to cross training and one for bootcamp, suitable for beginners and people with disabilities. The fourth area is a free space dedicated to those who want to do yoga or dance

KEY WORDS:

Discipline, open air, personal growth, sharing

LINKS:

<https://www.dolomeet.com/blog/calisthenics-park-per-lallenamento-outdoor-cosa-sono-e-quanto-costano>

<https://www.sportpark.com/outdoorpark/>

05 - Strutture Calisthenics at Parco del Dono Lacertonus, Parma 2022



05 - Strutture Calisthenics at Parco del Dono

DESCRIPTION:

The structures, produced and installed by Lacertosus - a Parma company that operates all over the world, are equipped with all the basic functions to be able to practice calisthenics and free body, for both beginners and advanced levels.

KEY WORDS:

Green space, fun, accessibility, diffusion

CLIENT:

Parma municipality

LINKS:

<https://www.comune.parma.it/it/novita/notizie/quattro-nuovi-impianti-di-ultima-generazione-per-il-fitness-nei-parchi-di-parma>

YAPBOZ

YAPBOZ

[From "yap" (to make) + "boz" (to distort). Literally "make & distort"]

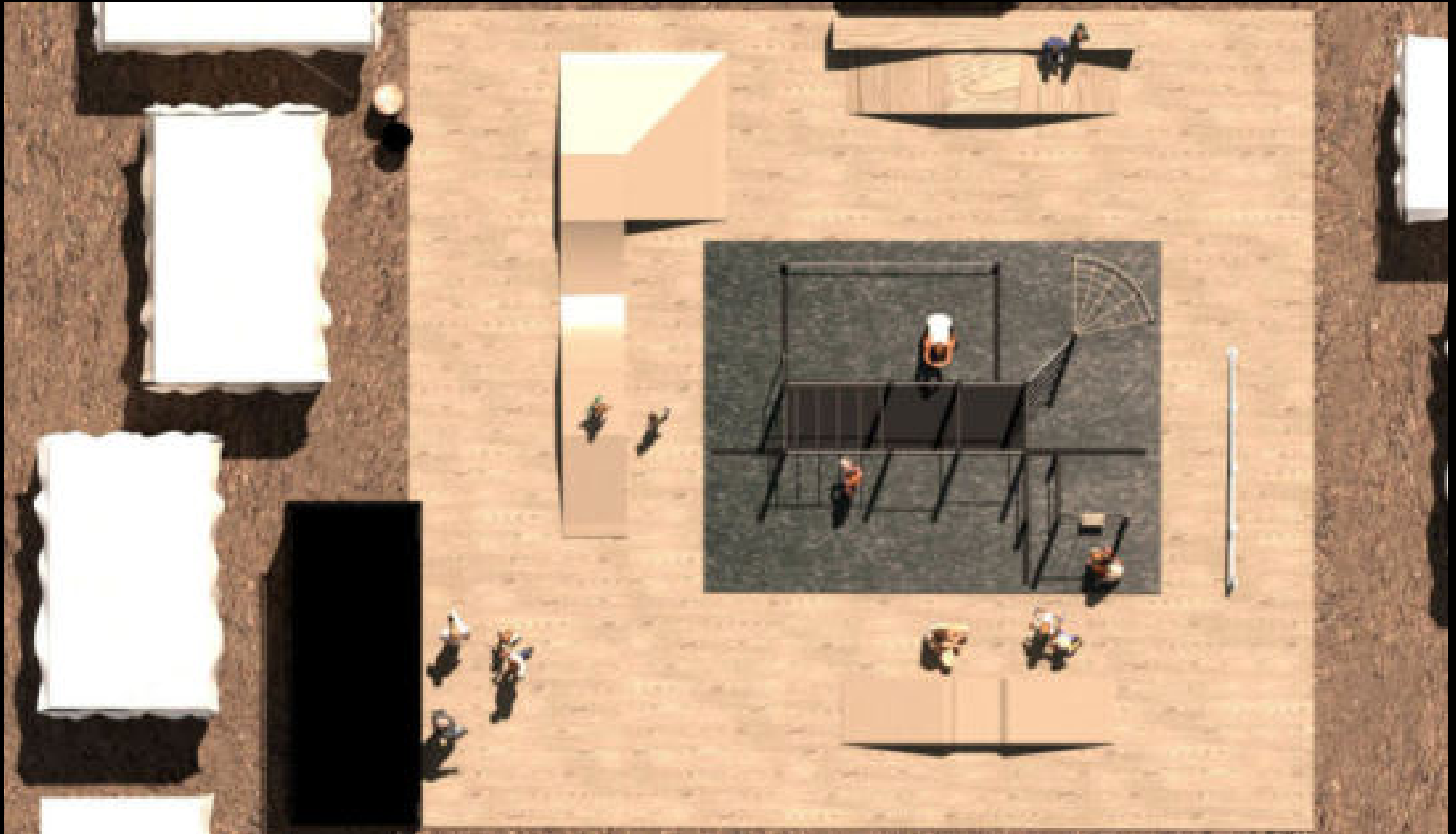
Literal translation of the word puzzle, yapboz is a Turkish word that maintains a close connection with the playful component, the key to the project.

In this context, “yapboz” symbolizes the connection of distinct elements for the creation of different practical and functional compositions, adaptable to the number of users, available space and other specific needs. By assimilating the same flexibility and versatility of a puzzle, our project allows the creation of one dynamic and adaptable space. Just like the second element of the word, boz, in our proposal also highlights the aspect of "rupture" and "destruction", which yes manifests itself through the easy dismantling of the structures, making them ready to be used moved and recomposed in a new configuration in the same place or in a tent city different.

The word “yapboz” appears in the project logo, placed inside a wheel skate. The side opening of the wheel aims to recall the half-moon shape of the Turkish flag, iconic national emblem of the country.







YAPBOZ

The project revolves around two proposals designed to coexist in a single general project, which aims to improve the health and psychophysical well-being of people affected by catastrophic events through sport and social interactions. An integral part of both proposals is the support intervention in the disaster sites through temporary structures intended for the generation of electricity, the improvement of health conditions and assistance.





TEMPORARY STRUCTURES - CONTAINERS

Since the container is the means of transport chosen for this project, given the versatility of the format which can therefore travel both on wheels and on rails or ships, to integrate both proposals are container elements that perform specific functions to alleviate the situation that the displaced live, thus achieving not only the improvement of their conditions but also the attraction of people in the area to the intervention site.

Specifically, these are structures designed for the generation of electricity, for the reception and distribution of basic necessities, for water purification and as toilet and nursing services.







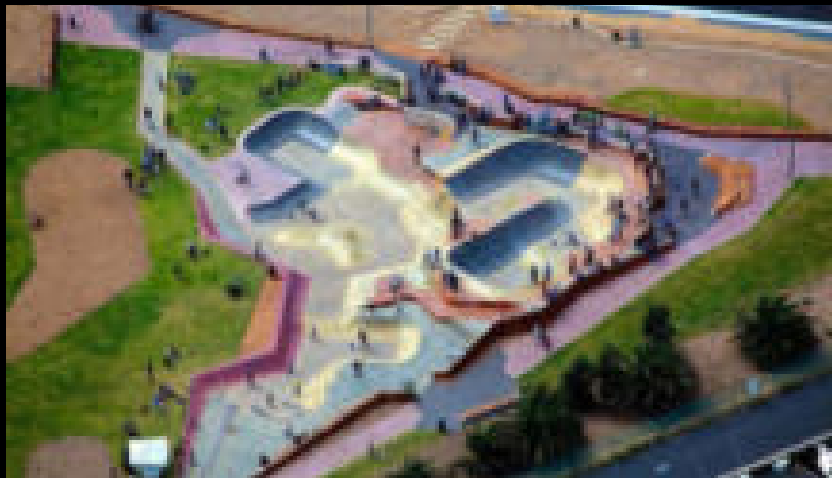
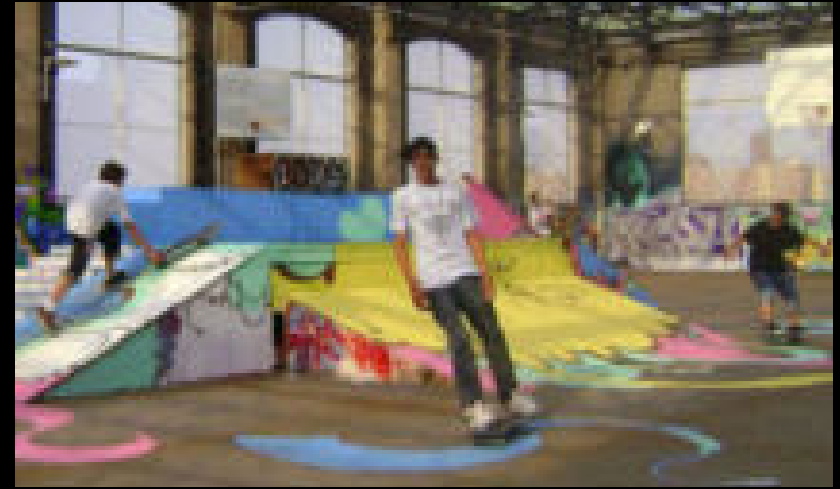
SKATE PROPOSAL

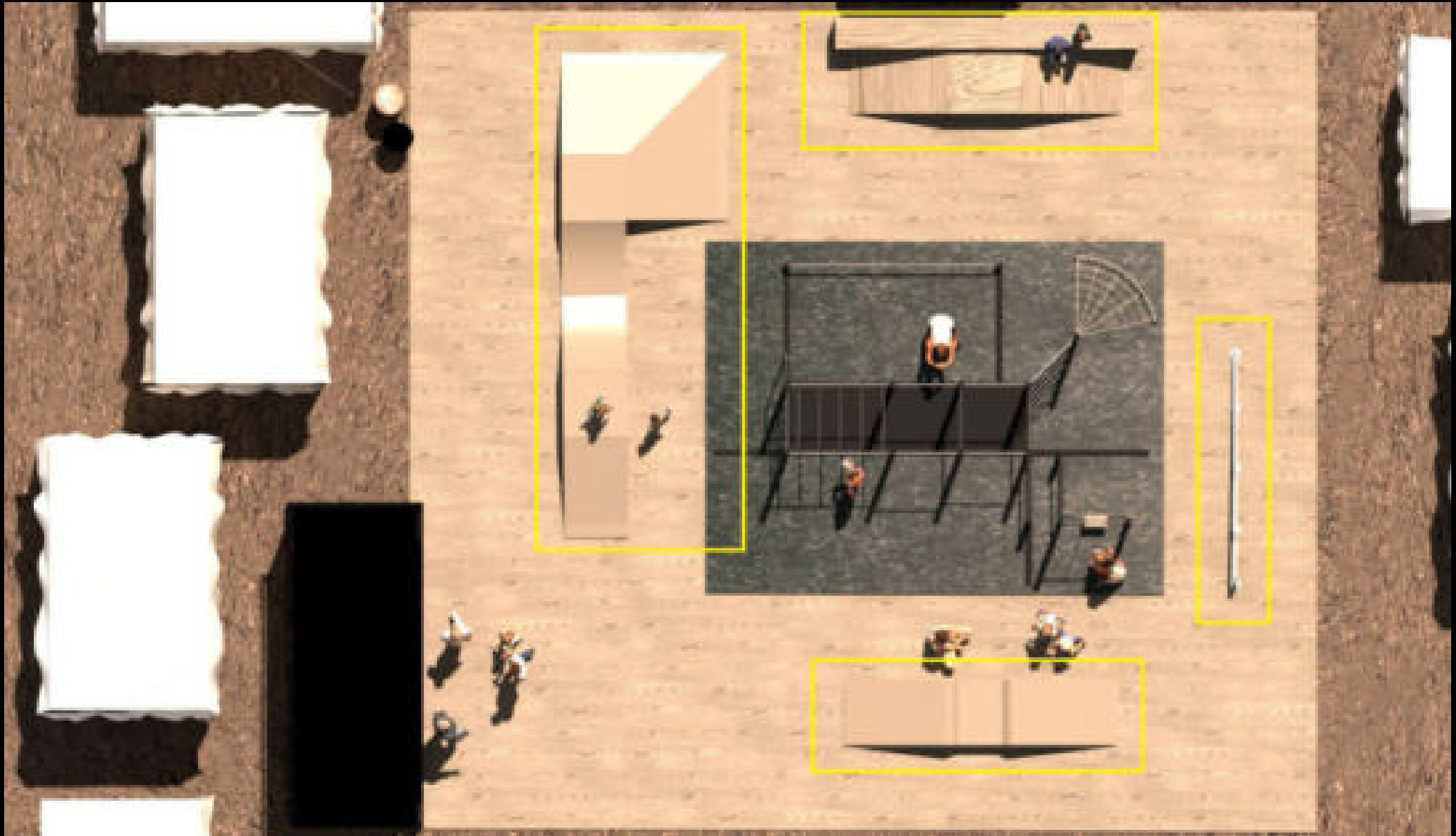
The well-being linked to the practice of skateboarding is not only linked to its existence as a sport, but also as a means of socialisation, belonging to a group and as an object of constant learning through others.

The inclusion of skating in a dramatic context such as the Turkish one aims to involve multiple generations, linked by a common passion, through a sport in which each learns from the other, thus building bonds useful for overcoming psychological traumas, even through the occupational therapeutic effect of the sport itself.

The ramps and elements positioned within the perimeter allow users to try a very high number of tricks while maintaining a not excessive quantity of overall elements, covering the flooring with wooden panels covering an area of 62 m², which only require to be smoothed before positioning.

Moodboard









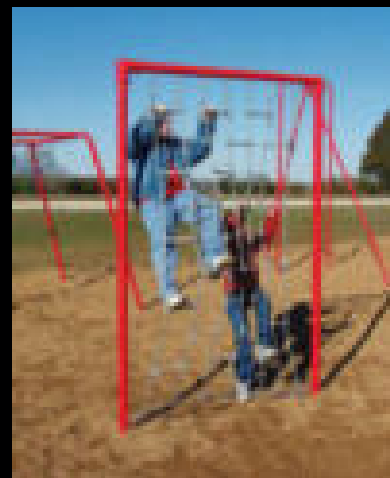
CALISTHENICS PROPOSAL

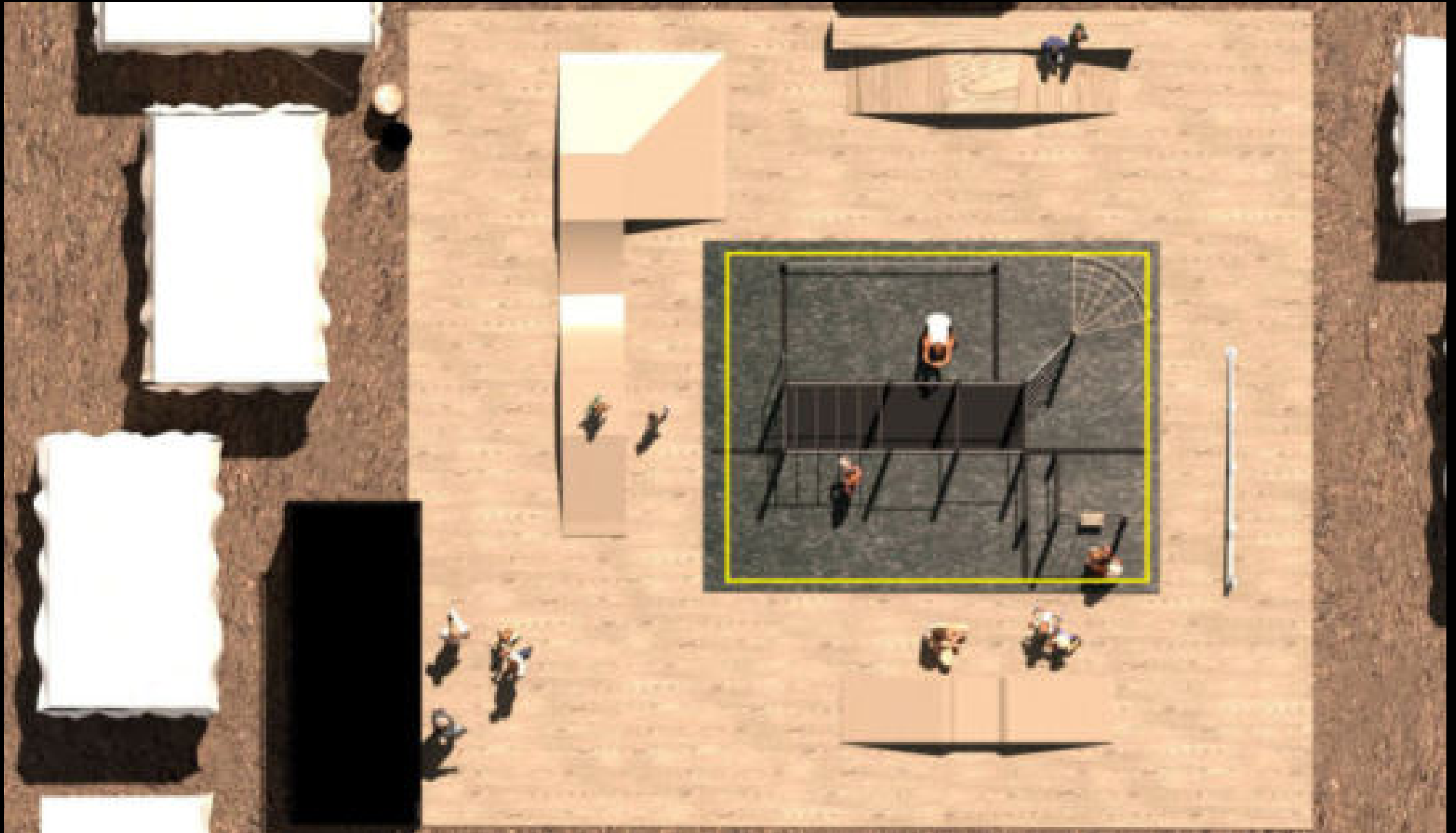
Calisthenics maintains many traits in common with skating, it is also a partially social sport, in which we tend to learn from each other; in particular, it is a practice that can take place almost anywhere and without the need for particular tools other than wall bars and bars, which can be shared between several people.

This sport has as its main characteristic the fact that it rotates entirely through body weight, therefore not requiring additional weights or complex machinery to guarantee perfect physical form through its practice.

Inside a 45m² area covered with anti-accident panels, a fair amount of equipment is placed, which also integrates some elements designed for the little ones. As in the previous case, the ground only needs to be leveled before positioning and the structures are entirely self-supporting.

Moodboard

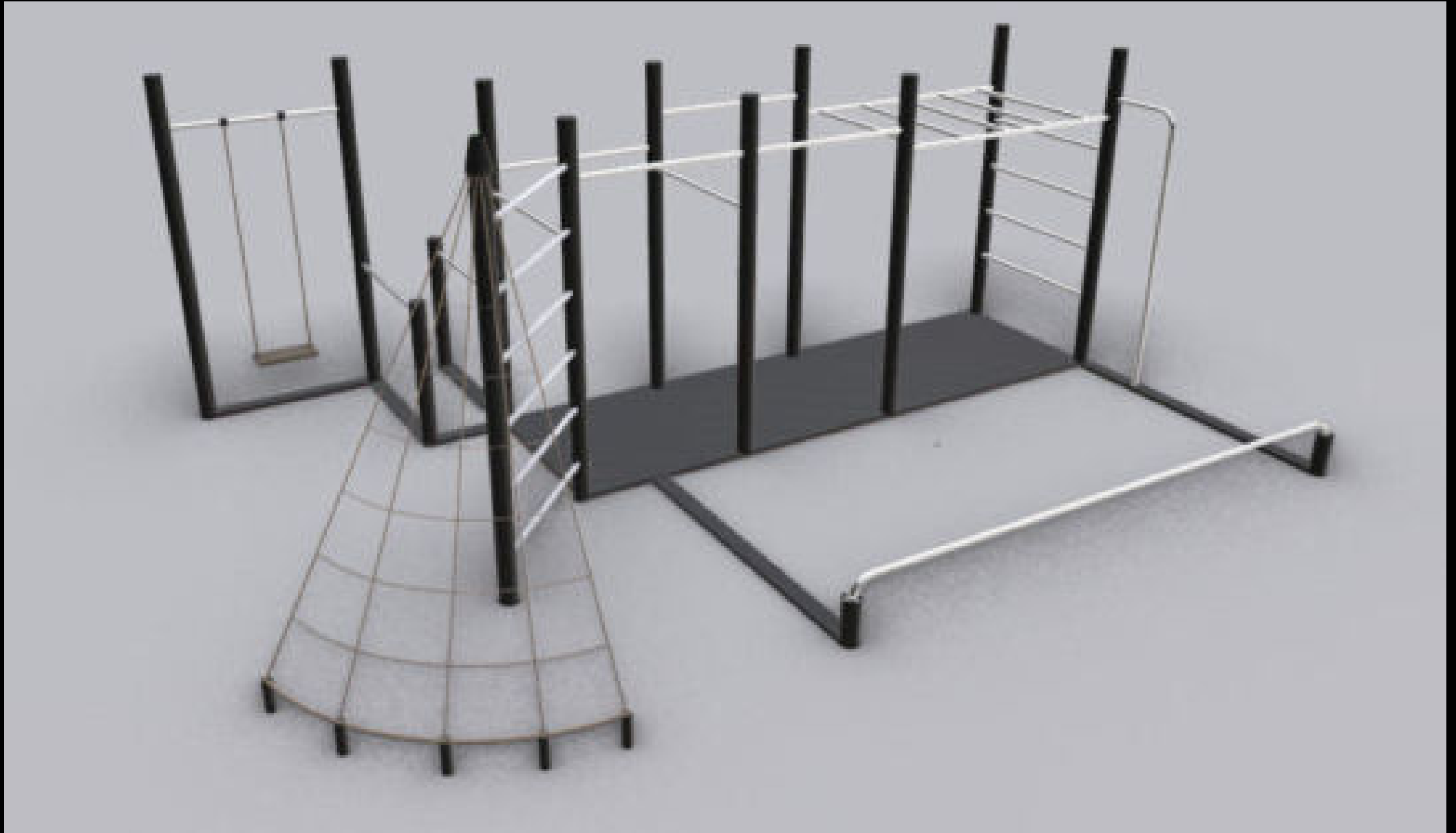












PRICING & FOUNDING

In difficult situations like those of Turkey, a project that brings relief to communities is absolutely necessary. We thus asked ourselves how six students can, in a practical reality, create an overall project complete with all its parts. At the basis of Yapboz there is a desire to guarantee the connection and therefore the presence of different elements.

The puzzle doesn't just stop at the skatepark/calisthenics, which is rather the beating heart of Yapboz, but is also made up of other solutions useful to the cause, such as the presence of Macoser containers.

The innovative aspect lies in how these solutions find their realization: a partnership between universities, students, companies and non-profit organizations in favor of this type of cause.

The proposal is to involve student interns in a hypothetical collaboration between companies, agreed with the university.

In our case, dividing the interns between the companies Mecoser, Holzhof and Legnolandia: the students collaborate with each other, putting the different companies in contact, with the aim of presenting a realistic project at the end of the internship, which benefits the company image. At this point the non-profit organizations come into play and, in agreement with the companies (provided that all parties want to participate), manage the logistics and funds needed for implementation.

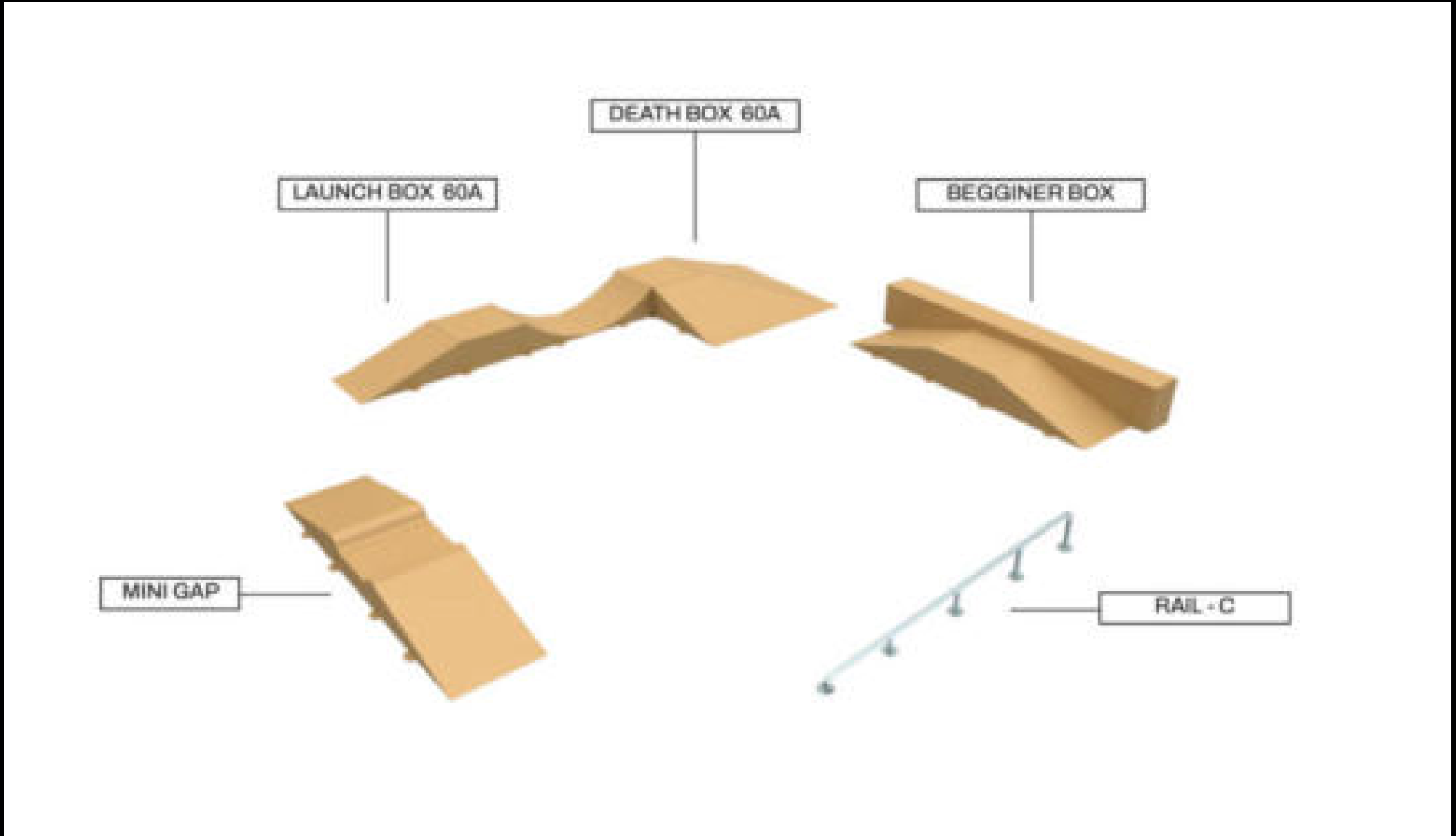
At the same time, just as planned, the absence of some parties must not affect the result, and this is precisely the objective: a partnership that leaves the different parties the choice of how much and how to participate, but also the possibility of backwards.

According to the estimates that we managed to obtain, the overall project of both proposals would require an amount of €70,697 to start, to which shipping, assembly, maintenance and disassembly costs must be added.

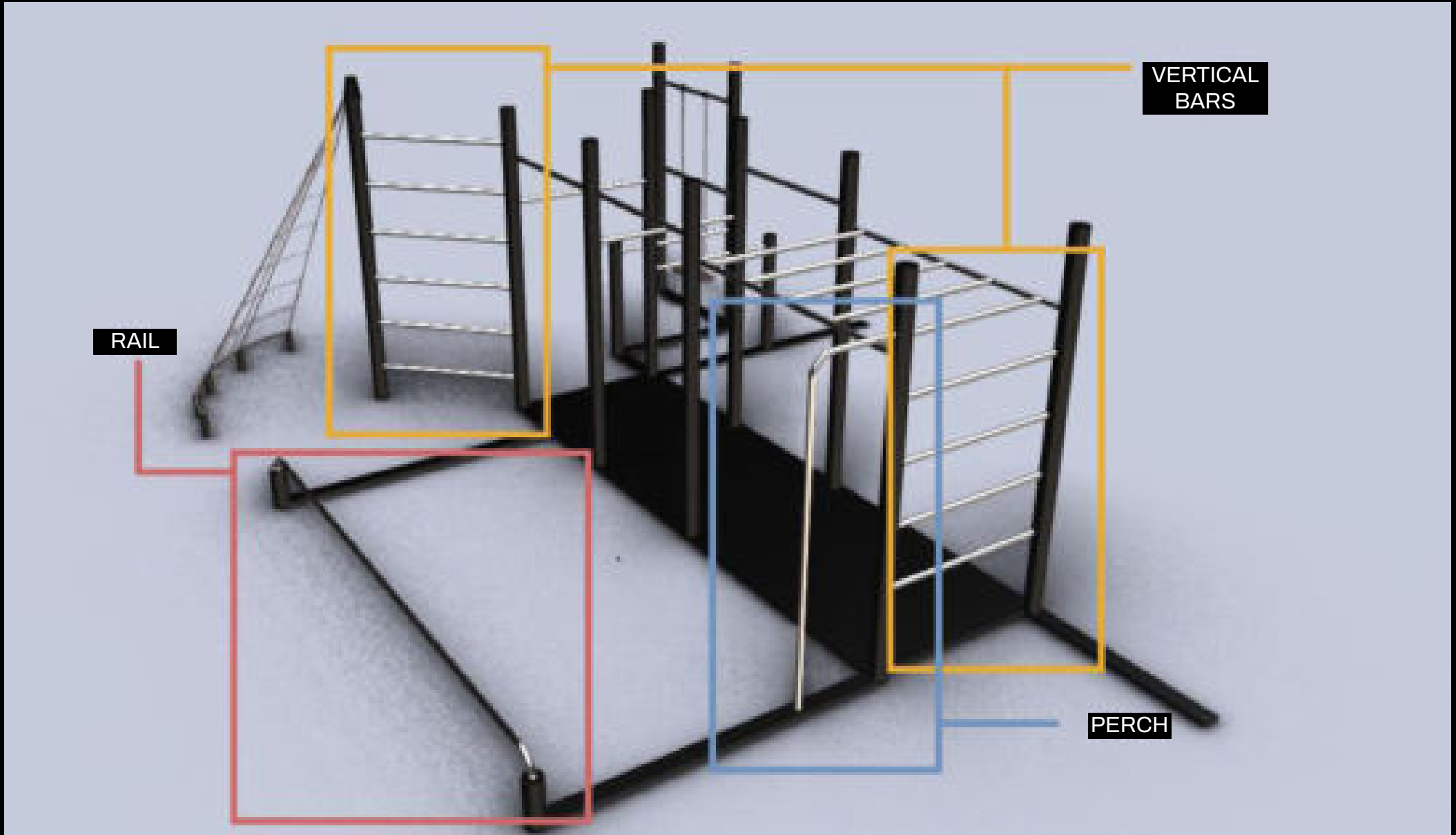
Pricing

	dimensions (cm)	price (€)
CALISTHENICS		
VERTICAL BARS	256x 125cm	542,00 €
RAIL	400x30cm	260,00 €
PERTICA	219x53cm	295,00 €
HORIZONTAL BARS	256x125cm	585,00 €
PULLUP CASTLE	varie	1.920,00 €
PARALLEL BARS	120x120cm	1.380,00 €
NETWORK GAME ROTO 3000	256x75g	856,00 €
BEARING STRUCTURE	8,8m ²	1.240,00 €
ANTY-INJURY PANELS	45m ²	1.685,00 €
		8.743,00 €
SKATEPARK		
013009 BEGINNER BOX	520X175X80cm	9.421,00 €
013009 BEGINNER BOX - C	520X125X80cm	718,00 €
013027 LAUNC BOX 80 A	475X125X80cm	4.995,00 €
013083 DEATH BOX 80 A	475X125X80cm	10.190,00 €
013121 MINI GAP	450X80cm	4.995,00 €
WOODEN BASE	62m ²	2.728,00 €
		33.047,00 €
CONTAINER		
INFO POINT - FIRST AID		4.580,00 €
WATER PURIFIER		6.530,00 €
TOILETS		5.300,00 €
DISTRIBUTION POINTS OF ESSENTIAL GOODS		3.110,00 €
INFIRMARY		4.990,00 €
ENERGY PRODUCTION		7.145,00 €
		31.635,00 €

Pricing



Pricing



Pricing

